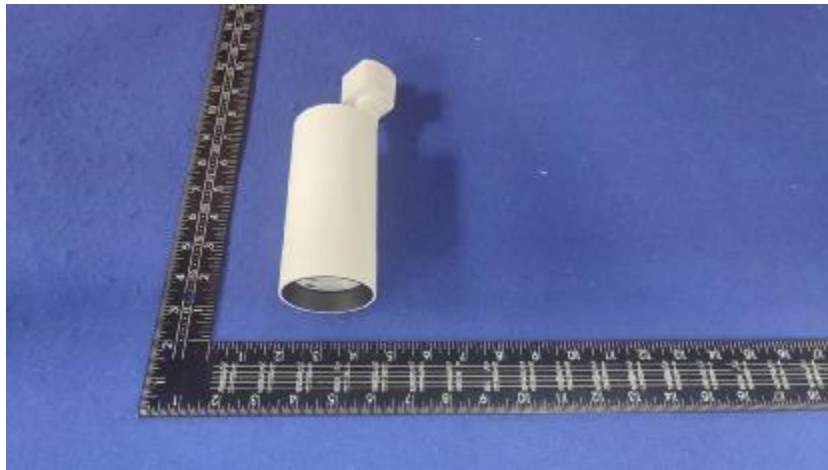


Luminaire Photograph



Light Output Ratio:	90.6%	
Luminaire Power:	20.34 W	
SHR Nominal:	0.75	Calculated using the TM5
SHR Maximum:	0.80	fine grid method.

C Range: 0 - 360DEG
 C Interval: 30.0DEG
 Test Speed: HIGH
 Temperature: 25.3DEG
 Operators: Zoe
 Test Date: 2023-3-14

γ Range: 0 - 180DEG
 γ Interval: 1.0DEG
 Test System: EVERFINE GO-SPEX500_V1 SYSTEM V2.00.416
 Humidity: 65.0%
 Test Distance: 3.160m [K=1.0000]
 Remarks: LAMP: BXRE-30G1000-A-83 Ra: 90
 LENS: TH-YL5023H-60D 60R
 DRIVER: RISE 120V 500mA
 30minutes warm-up

LUMINOUS INTENSITY DISTRIBUTION DIAGRAM

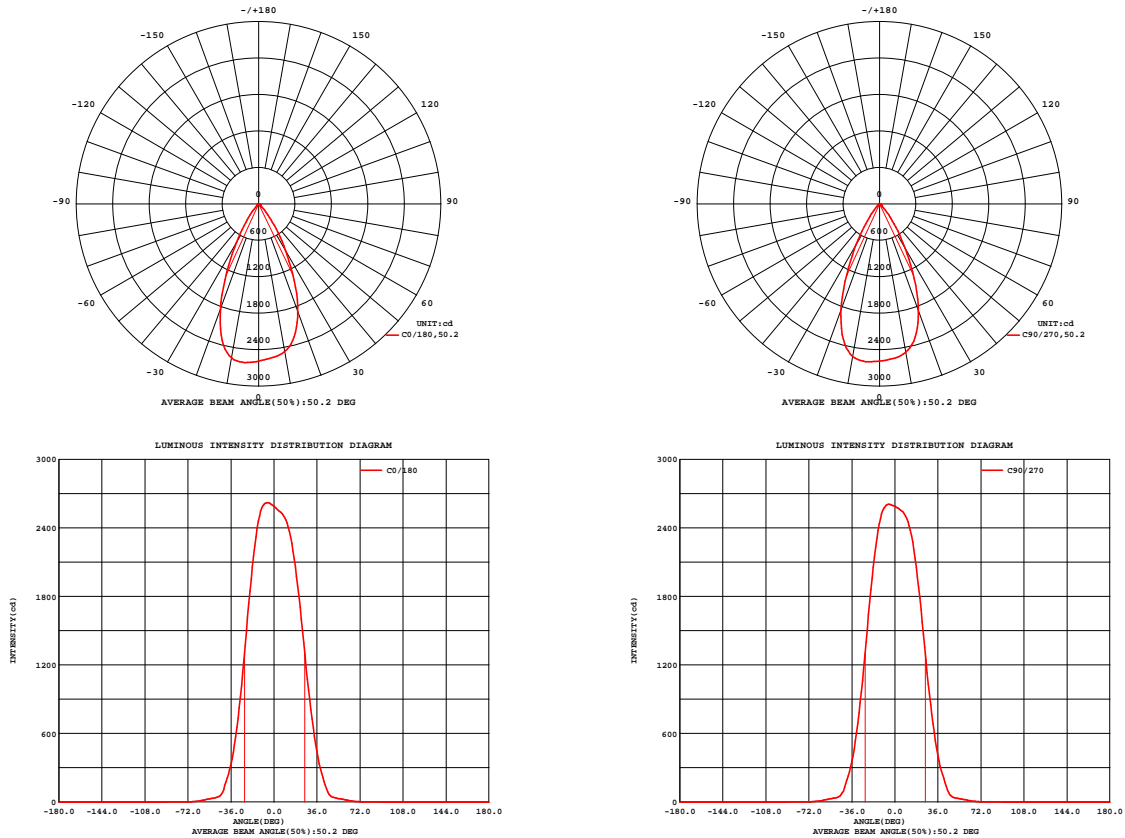


Fig. C0/C180

Fig. C90/C270

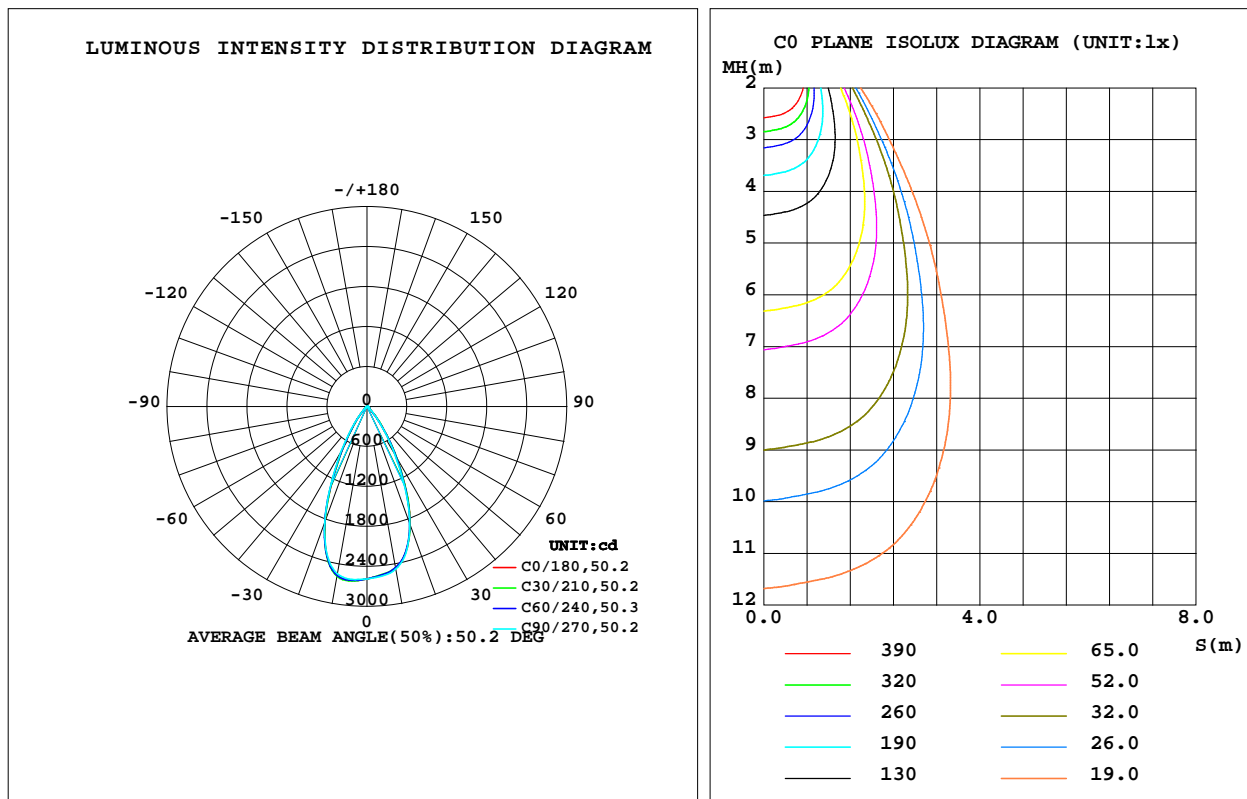
C Range: 0 - 360DEG
C Interval: 30.0DEG
Test Speed: HIGH
Temperature: 25.3DEG
Operators: Zoe
Test Date: 2023-3-14

γ Range: 0 - 180DEG
 γ Interval: 1.0DEG
Test System: EVERFINE GO-SPEX500_V1 SYSTEM V2.00.416
Humidity: 65.0%
Test Distance: 3.160m [K=1.0000]
Remarks: LAMP: BXRE-30G1000-A-83 Ra: 90
LENS: TH-YL5023H-60D 60R
DRIVER: RISE 120V 500mA
30minutes warm-up

LUMINAIRE PHOTOMETRIC TEST REPORT

Test:U:120.02V I:0.1708A P:20.344W PF:0.9908 Freq:59.98Hz Lamp Flux:2052.9x1 lm		
NAME: 2319.200-H3AM-500	TYPE:	WEIGHT:
SPEC.:3000K	DIM.:	SERIAL No.:2303140309
MFR.: RISE	SUR.:0.002826m2	Shielding Angle:

DATA OF LAMP		PHOTOMETRIC DATA Eff: 91.41 lm/W			
MODEL	Bridgelux	I _{max} (cd)	2631	S/MH(C0/180)	0.75
NOMINAL POWER(W)	20	LOR(%)	90.6	S/MH(C90/270)	0.76
RATED VOLTAGE(V)	120	TOTAL FLUX(lm)	1859.6	η UP,DN(C0-180)	0.0,45.7
NOMINAL FLUX(lm)	2052.9	CIE CLASS	DIRECT	η UP,DN(C180-360)	0.0,44.9
LAMPS INSIDE	1	η up(%)	0.0	CIBSE SHR NOM	0.75
TEST VOLTAGE(V)	120	η down(%)	90.6	CIBSE SHR MAX	0.80



C Range: 0 - 360DEG
C Interval: 30.0DEG
Test Speed: HIGH
Temperature:25.3DEG
Operators:Zoe
Test Date:2023-3-14

γ Range: 0 - 180DEG
γ Interval: 1.0DEG
Test System:EVERFINE GO-SPEX500_V1 SYSTEM V2.00.416
Humidity:65.0%
Test Distance:3.160m [K=1.0000]
Remarks: LAMP:BXRE-30G1000-A-83 Ra:90
LENS: TH-YL5023H-60D 60R
DRIVER: RISE 120V 500mA
30minutes warm-up

ZONAL FLUX DIAGRAM

ZONAL FLUX DIAGRAM:

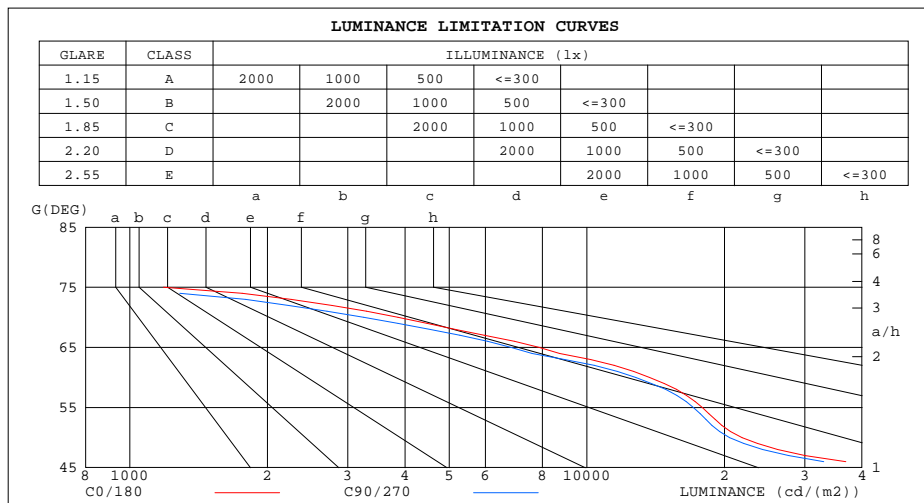
γ	C0	C45	C90	C135	C180	C225	C270	C315	γ	Φ zone	Φ total	%lum,lamp
10	2468	2459	2480	2524	2576	2584	2552	2511	0- 10	244.6	244.6	13.2,11.9
20	1888	1887	1876	1811	1843	1855	1862	1911	10- 20	629.6	874.2	47,42.6
30	892.1	898.1	850.3	741.7	733.0	737.0	779.1	888.1	20- 30	599.4	1474	79.2,71.8
40	251.9	252.1	239.9	184.2	177.1	162.4	193.4	244.0	30- 40	284.8	1758	94.6,85.7
50	39.64	38.76	37.34	33.51	34.74	33.85	35.81	35.46	40- 50	68.97	1827	98.3,89
60	19.36	19.42	18.08	14.38	14.06	13.68	15.76	17.59	50- 60	23.42	1851	99.5,90.2
70	3.726	3.597	3.143	2.193	2.030	1.910	2.359	3.138	60- 70	7.977	1859	100,90.5
80	0.0764	0.0605	0.0611	0.0477	0.0568	0.0441	0.0537	0.0527	70- 80	0.8378	1860	100,90.6
90	0	0	0	0	0	0	0	0	80- 90	0.0406	1860	100,90.6
100	0	0	0	0	0	0	0	0	90-100	0	1860	100,90.6
110	0	0	0	0	0	0	0	0	100-110	0	1860	100,90.6
120	0	0	0	0	0	0	0	0	110-120	0	1860	100,90.6
130	0	0	0	0	0	0	0	0	120-130	0	1860	100,90.6
140	0	0	0	0	0	0	0	0	130-140	0	1860	100,90.6
150	0	0	0	0	0	0	0	0	140-150	0	1860	100,90.6
160	0	0	0	0	0	0	0	0	150-160	0	1860	100,90.6
170	0	0	0	0	0	0	0	0	160-170	0	1860	100,90.6
180	0	0	0	0	0	0	0	0	170-180	0	1860	100,90.6
DEG	LUMINOUS INTENSITY:cd									UNIT:lm		

C Range: 0 - 360DEG
C Interval: 30.0DEG
Test Speed: HIGH
Temperature:25.3DEG
Operators:Zoe
Test Date:2023-3-14

γ Range: 0 - 180DEG
γ Interval: 1.0DEG
Test System:EVERFINE GO-SPEX500_V1 SYSTEM V2.00.416
Humidity:65.0%
Test Distance:3.160m [K=1.0000]
Remarks: LAMP:BXRE-30G1000-A-83 Ra:90
LENS: TH-YL5023H-60D 60R
DRIVER: RISE 120V 500mA
30minutes warm-up

LUMINANCE LIMITATION CURVES

Test:U:120.02V I:0.1708A P:20.344W PF:0.9908 Freq:59.98Hz Lamp Flux:2052.9x1 lm		
NAME: 2319.200-H3AM-500	TYPE:	WEIGHT:
SPEC.:3000K	DIM.:	SERIAL No.:2303140309
MFR.: RISE	SUR.:0.002826m2	Shielding Angle:



LUMINANCE cd/(m2)		
G(180)	C0/180	C90/270
85	210	180
80	156	124
75	1184	698
70	3863	3250
65	7861	6830
60	13727	12793
55	17908	17115
50	21870	20545
45	43688	40905

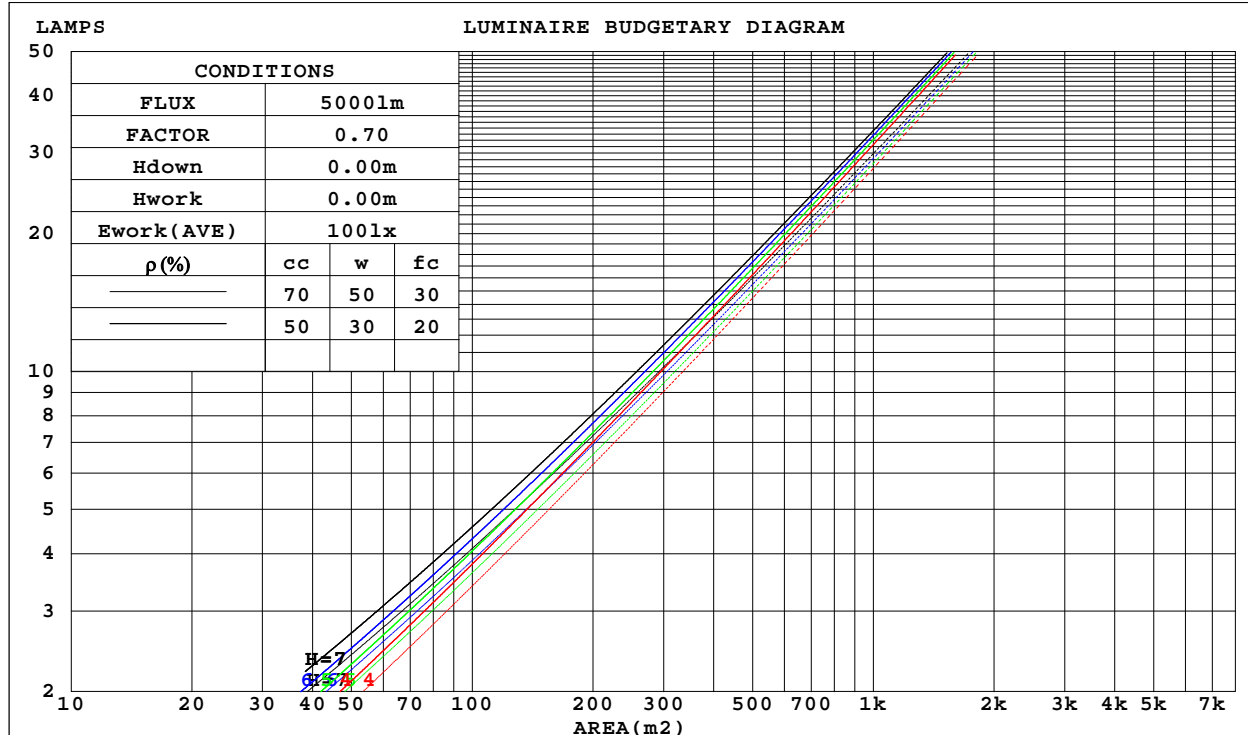
C Range: 0 - 360DEG
C Interval: 30.0DEG
Test Speed: HIGH
Temperature:25.3DEG
Operators:Zoe
Test Date:2023-3-14

γ Range: 0 - 180DEG
γ Interval: 1.0DEG
Test System:EVERFINE GO-SPEX500_V1 SYSTEM V2.00.416
Humidity:65.0%
Test Distance:3.160m [K=1.0000]
Remarks: LAMP:BXRE-30G1000-A-83 Ra:90
LENS: TH-YL5023H-60D 60R
DRIVER: RISE 120V 500mA
30minutes warm-up

CU AND LUMINAIRE BUDGETARY ESTIMATE DIAGRAM

Test:U:120.02V I:0.1708A P:20.344W PF:0.9908 Freq:59.98Hz Lamp Flux:2052.9x1 lm		
NAME: 2319.200-H3AM-500	TYPE:	WEIGHT:
SPEC.:3000K	DIM.:	SERIAL No.:2303140309
MFR.: RISE	SUR.:0.002826m2	Shielding Angle:

ρ_{cc}	80%			70%			50%			30%			10%			0
ρ_w	50%	30%	10%	50%	30%	10%	50%	30%	10%	50%	30%	10%	50%	30%	10%	0
ρ_{fc}	20%			20%			20%			20%			20%			0
RCR	RCR:Room Cavity Ratio			Coefficients of Utilization(CU)												
0.0	1.08	1.08	1.08	1.05	1.05	1.05	1.01	1.01	1.01	.96	.96	.96	.92	.92	.92	.91
1.0	1.01	.99	.97	.99	.97	.95	.95	.94	.92	.92	.91	.89	.89	.88	.87	.85
2.0	.94	.91	.88	.93	.90	.87	.90	.87	.85	.87	.85	.83	.85	.83	.81	.80
3.0	.88	.84	.81	.87	.83	.80	.85	.82	.79	.83	.80	.78	.81	.78	.76	.75
4.0	.83	.78	.75	.82	.78	.74	.80	.76	.73	.78	.75	.73	.77	.74	.72	.70
5.0	.78	.73	.70	.77	.73	.69	.76	.72	.69	.74	.71	.68	.73	.70	.68	.66
6.0	.74	.69	.65	.73	.68	.65	.72	.68	.65	.71	.67	.64	.69	.66	.64	.62
7.0	.70	.65	.61	.69	.65	.61	.68	.64	.61	.67	.63	.60	.66	.63	.60	.59
8.0	.66	.61	.58	.66	.61	.58	.65	.61	.57	.64	.60	.57	.63	.60	.57	.56
9.0	.63	.58	.55	.63	.58	.55	.62	.57	.54	.61	.57	.54	.60	.57	.54	.53
10.0	.60	.55	.52	.60	.55	.52	.59	.55	.52	.58	.54	.51	.58	.54	.51	.50



C Range: 0 - 360DEG
C Interval: 30.0DEG
Test Speed: HIGH
Temperature:25.3DEG
Operators:Zoe
Test Date:2023-3-14

γ Range: 0 - 180DEG
 γ Interval: 1.0DEG
Test System:EVERFINE GO-SPEX500_V1 SYSTEM V2.00.416
Humidity:65.0%
Test Distance:3.160m [K=1.0000]
Remarks: LAMP:BXRE-30G1000-A-83 Ra:90
LENS: TH-YL5023H-60D 60R
DRIVER: RISE 120V 500mA
30minutes warm-up

WEC AND CCEC

Test:U:120.02V I:0.1708A P:20.344W PF:0.9908 Freq:59.98Hz Lamp Flux:2052.9x1 lm		
NAME: 2319.200-H3AM-500	TYPE:	WEIGHT:
SPEC.:3000K	DIM.:	SERIAL No.:2303140309
MFR.: RISE	SUR.:0.002826m2	Shielding Angle:

ρ_{cc}	80%			70%			50%			30%			10%			0
ρ_w	50%	30%	10%	50%	30%	10%	50%	30%	10%	50%	30%	10%	50%	30%	10%	0
ρ_{fc}	20%			20%			20%			20%			20%			0
RCR	RCR:Room Cavity Ratio						Wall Exitance Coefficients(WEC)									
0.0																
1.0	.153	.087	.028	.147	.084	.027	.136	.078	.025	.125	.072	.023	.116	.067	.022	
2.0	.146	.080	.025	.141	.078	.024	.132	.073	.023	.123	.069	.022	.115	.065	.020	
3.0	.139	.074	.022	.135	.072	.022	.127	.069	.021	.119	.065	.020	.112	.062	.019	
4.0	.132	.069	.020	.128	.067	.020	.122	.064	.019	.115	.062	.019	.109	.059	.018	
5.0	.126	.064	.019	.123	.063	.018	.117	.061	.018	.111	.059	.017	.106	.057	.017	
6.0	.120	.060	.017	.117	.059	.017	.112	.057	.017	.107	.056	.016	.102	.054	.016	
7.0	.115	.057	.016	.112	.056	.016	.108	.054	.016	.103	.053	.015	.099	.052	.015	
8.0	.110	.054	.015	.108	.053	.015	.104	.052	.015	.100	.051	.015	.096	.049	.014	
9.0	.105	.051	.014	.104	.050	.014	.100	.049	.014	.096	.048	.014	.093	.047	.014	
10.0	.101	.049	.013	.100	.048	.013	.096	.047	.013	.093	.046	.013	.090	.045	.013	

ρ_{cc}	80%			70%			50%			30%			10%			0	
ρ_w	50%	30%	10%	50%	30%	10%	50%	30%	10%	50%	30%	10%	50%	30%	10%	0	
ρ_{fc}	20%			20%			20%			20%			20%			0	
RCR	RCR:Room Cavity Ratio						Ceiling Cavity Exitance Coefficients(CCEC)										
0.0	.173	.173	.173	.147	.147	.147	.101	.101	.101	.058	.058	.058	.018	.018	.018		
1.0	.155	.143	.132	.132	.122	.113	.090	.084	.078	.052	.049	.046	.017	.016	.015		
2.0	.140	.120	.103	.120	.103	.089	.082	.072	.062	.047	.042	.036	.015	.013	.012		
3.0	.129	.103	.082	.110	.089	.071	.076	.062	.050	.044	.036	.029	.014	.012	.010		
4.0	.119	.089	.067	.102	.077	.058	.070	.054	.041	.041	.032	.024	.013	.010	.008		
5.0	.111	.079	.055	.095	.068	.048	.066	.048	.034	.038	.028	.020	.012	.009	.007		
6.0	.104	.070	.046	.089	.061	.040	.062	.043	.028	.036	.025	.017	.012	.008	.006		
7.0	.098	.063	.039	.084	.055	.034	.058	.038	.024	.034	.023	.014	.011	.007	.005		
8.0	.093	.058	.033	.080	.050	.029	.055	.035	.021	.032	.021	.012	.010	.007	.004		
9.0	.088	.053	.029	.076	.046	.025	.053	.032	.018	.031	.019	.011	.010	.006	.004		
10.0	.084	.049	.025	.072	.042	.022	.050	.030	.016	.029	.018	.009	.010	.006	.003		

C Range: 0 - 360DEG
 C Interval: 30.0DEG
 Test Speed: HIGH
 Temperature:25.3DEG
 Operators:Zoe
 Test Date:2023-3-14

γ Range: 0 - 180DEG
 γ Interval: 1.0DEG
 Test System:EVERFINE GO-SPEX500_V1 SYSTEM V2.00.416
 Humidity:65.0%
 Test Distance:3.160m [K=1.0000]
 Remarks: LAMP:BXRE-30G1000-A-83 Ra:90
 LENS: TH-YL5023H-60D 60R
 DRIVER: RISE 120V 500mA
 30minutes warm-up

UGR(Unified Glare Rating) Table

Test:U:120.02V I:0.1708A P:20.344W PF:0.9908 Freq:59.98Hz Lamp Flux:2052.9x1 lm										
NAME: 2319.200-H3AM-500					TYPE:			WEIGHT:		
SPEC.:3000K					DIM.:			SERIAL No.:2303140309		
MFR.: RISE					SUR.:0.002826m2			Shielding Angle:		
ceiling/cavity	0.7	0.7	0.5	0.5	0.3	0.7	0.7	0.5	0.5	0.3
walls	0.5	0.3	0.5	0.3	0.3	0.5	0.3	0.5	0.3	0.3
working plane	0.2	0.2	0.2	0.2	0.2	0.2	0.2	0.2	0.2	0.2
Room dimensions	Viewed crosswise					Viewed endwise				
x = 2H y = 2H	22.0	22.9	22.3	23.1	23.3	21.7	22.6	21.9	22.7	22.9
3H	21.9	22.7	22.2	22.9	23.1	21.5	22.4	21.8	22.6	22.8
4H	21.8	22.6	22.1	22.8	23.0	21.5	22.2	21.7	22.5	22.7
6H	21.7	22.5	22.0	22.7	22.9	21.4	22.1	21.7	22.3	22.6
8H	21.7	22.4	22.0	22.6	22.9	21.3	22.0	21.6	22.3	22.5
12H	21.6	22.3	22.0	22.6	22.9	21.3	22.0	21.6	22.2	22.5
4H 2H	21.8	22.6	22.1	22.8	23.0	21.5	22.3	21.8	22.5	22.7
3H	21.7	22.4	22.0	22.6	22.9	21.3	22.0	21.7	22.3	22.5
4H	21.6	22.2	21.9	22.5	22.8	21.2	21.9	21.6	22.1	22.5
6H	21.5	22.0	21.9	22.4	22.7	21.1	21.7	21.5	22.0	22.4
8H	21.5	21.9	21.8	22.3	22.7	21.1	21.6	21.5	21.9	22.3
12H	21.4	21.9	21.8	22.2	22.6	21.0	21.5	21.5	21.9	22.3
8H 4H	21.5	21.9	21.8	22.3	22.7	21.1	21.6	21.5	21.9	22.3
6H	21.3	21.8	21.8	22.1	22.6	21.0	21.4	21.4	21.8	22.2
8H	21.3	21.7	21.7	22.1	22.5	20.9	21.3	21.4	21.7	22.2
12H	21.2	21.5	21.7	22.0	22.5	20.9	21.2	21.4	21.6	22.1
12H 4H	21.4	21.9	21.8	22.2	22.6	21.0	21.5	21.5	21.9	22.3
6H	21.3	21.7	21.7	22.1	22.5	20.9	21.3	21.4	21.7	22.2
8H	21.2	21.5	21.7	22.0	22.5	20.9	21.2	21.4	21.6	22.1
Variations with the observer position at spacings:										
S = 1.0H	+ 3.0 / - 7.8					+ 3.0 / - 7.7				
1.5H	+ 5.3 / - 6.3					+ 5.3 / - 6.1				
2.0H	+ 4.4 / - 3.6					+ 4.3 / - 4.1				

CIE Pub.117, 2053 lm Total Lamp Luminous Flux Corrected (8log(F/F0) = 2.5)
Area: 0.002826 m2

C Range: 0 - 360DEG
C Interval: 30.0DEG
Test Speed: HIGH
Temperature:25.3DEG
Operators:Zoe
Test Date:2023-3-14

γ Range: 0 - 180DEG
γ Interval: 1.0DEG
Test System:EVERFINE GO-SPEX500_V1 SYSTEM V2.00.416
Humidity:65.0%
Test Distance:3.160m [K=1.0000]
Remarks: LAMP:BXRE-30G1000-A-83 Ra:90
LENS: TH-YL5023H-60D 60R
DRIVER: RISE 120V 500mA
30minutes warm-up

UTILIZATION FACTORS TABLE

Test:U:120.02V I:0.1708A P:20.344W PF:0.9908 Freq:59.98Hz Lamp Flux:2052.9x1 lm		
NAME: 2319.200-H3AM-500	TYPE:	WEIGHT:
SPEC.:3000K	DIM.:	SERIAL No.:2303140309
MFR.: RISE	SUR.:0.002826m2	Shielding Angle:

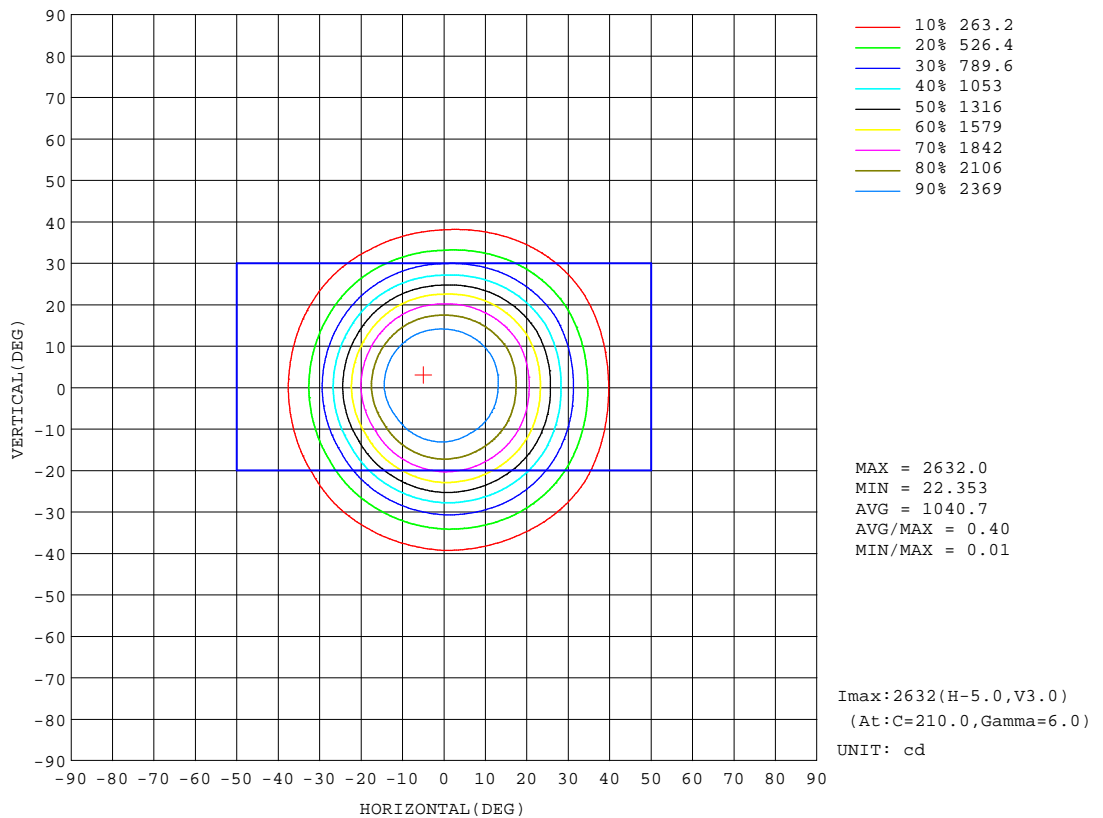
REFLECTANCE										
Ceiling	0.8	0.8	0.8	0.7	0.7	0.7	0.5	0.5	0.5	0
Walls	0.7	0.5	0.3	0.7	0.5	0.3	0.7	0.5	0.3	0
Working plane	0.2	0.2	0.2	0.2	0.2	0.2	0.2	0.2	0.2	0
ROOM INDEX	UTILIZATION FACTORS(PERCENT) $k(RI) \times RCR = 5$									
k = 0.60	80	74	71	79	74	71	79	74	71	67
0.80	86	81	78	86	81	78	85	80	78	74
1.00	90	86	82	90	85	82	88	85	82	78
1.25	94	89	86	93	89	86	91	88	85	82
1.50	96	92	89	95	92	89	93	90	88	84
2.00	99	95	92	97	94	92	95	92	90	86
2.50	100	97	94	99	96	93	96	94	92	86
3.00	101	99	96	100	97	95	97	95	93	87
4.00	103	101	99	101	99	98	98	97	95	89
5.00	104	102	101	102	101	99	99	98	97	90
ROOM INDEX	UF(total)									Direct
According to DIN EN 13032-2 2004			Suspended					SHRNOM = 1.25		

C Range: 0 - 360DEG
C Interval: 30.0DEG
Test Speed: HIGH
Temperature:25.3DEG
Operators:Zoe
Test Date:2023-3-14

γ Range: 0 - 180DEG
 γ Interval: 1.0DEG
Test System:EVERFINE GO-SPEX500_V1 SYSTEM V2.00.416
Humidity:65.0%
Test Distance:3.160m [K=1.0000]
Remarks: LAMP:BXRE-30G1000-A-83 Ra:90
LENS: TH-YL5023H-60D 60R
DRIVER: RISE 120V 500mA
30minutes warm-up

ISOCANDELA DIAGRAM

Test:U:120.02V I:0.1708A P:20.344W PF:0.9908 Freq:59.98Hz Lamp Flux:2052.9x1 lm		
NAME: 2319.200-H3AM-500	TYPE:	WEIGHT:
SPEC.:3000K	DIM.:	SERIAL No.:2303140309
MFR.: RISE	SUR.:0.002826m2	Shielding Angle:



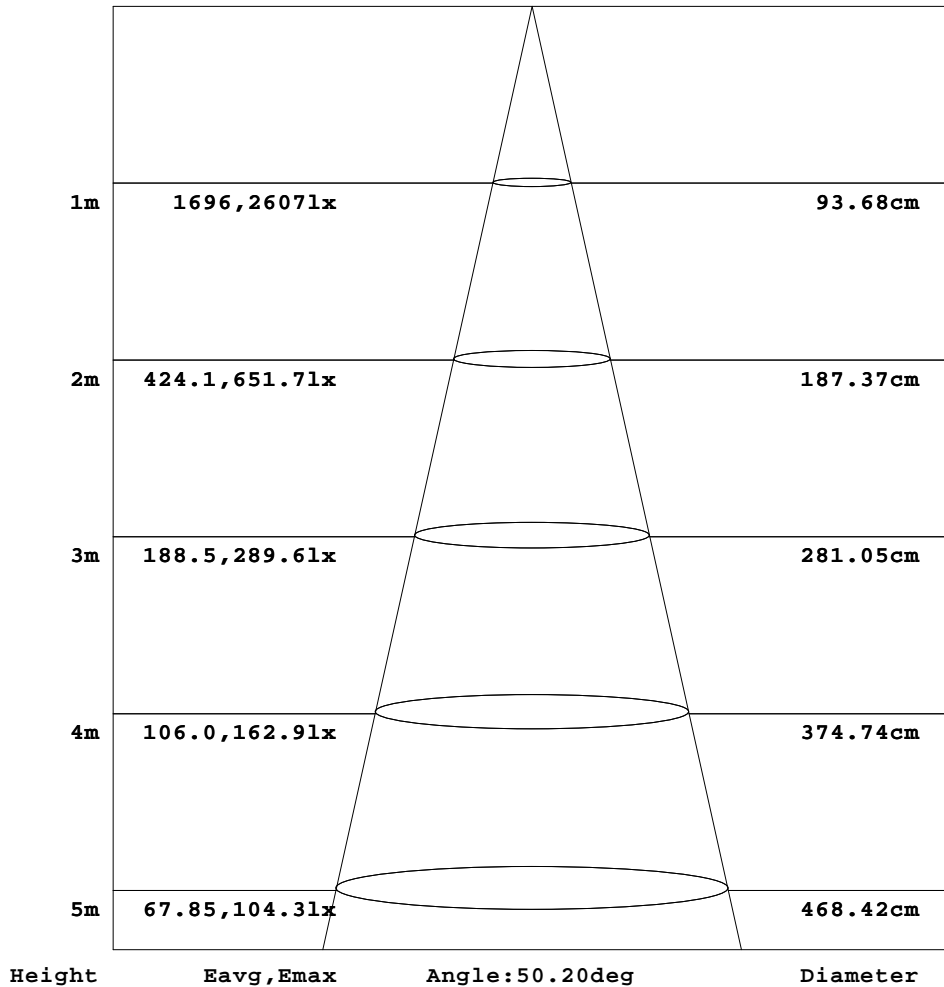
C Range: 0 - 360DEG
C Interval: 30.0DEG
Test Speed: HIGH
Temperature:25.3DEG
Operators:Zoe
Test Date:2023-3-14

γ Range: 0 - 180DEG
 γ Interval: 1.0DEG
Test System:EVERFINE GO-SPEX500_V1 SYSTEM V2.00.416
Humidity:65.0%
Test Distance:3.160m [K=1.0000]
Remarks: LAMP:BXRE-30G1000-A-83 Ra:90
LENS: TH-YL5023H-60D 60R
DRIVER: RISE 120V 500mA
30minutes warm-up

AAI Figure

Test:U:120.02V I:0.1708A P:20.344W PF:0.9908 Freq:59.98Hz Lamp Flux:2052.9x1 lm		
NAME: 2319.200-H3AM-500	TYPE:	WEIGHT:
SPEC.:3000K	DIM.:	SERIAL No.:2303140309
MFR.: RISE	SUR.:0.002826m2	Shielding Angle:

Flux out:1268 lm



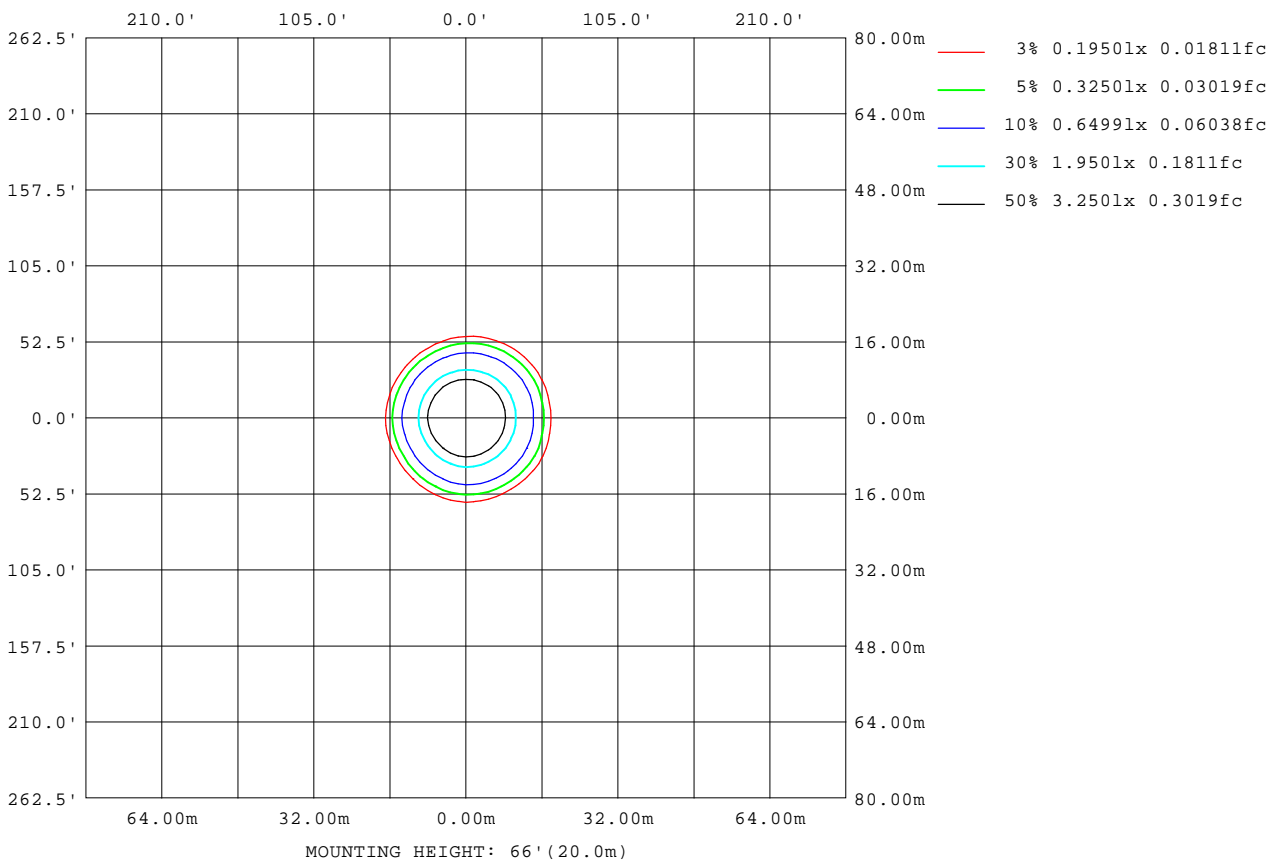
Note:The Curves indicate the illuminated area and the average illumination when the luminaire is at different distance.

C Range: 0 - 360DEG
C Interval: 30.0DEG
Test Speed: HIGH
Temperature:25.3DEG
Operators:Zoe
Test Date:2023-3-14

γ Range: 0 - 180DEG
γ Interval: 1.0DEG
Test System:EVERFINE GO-SPEX500_V1 SYSTEM V2.00.416
Humidity:65.0%
Test Distance:3.160m [K=1.0000]
Remarks: LAMP:BXRE-30G1000-A-83 Ra:90
LENS: TH-YL5023H-60D 60R
DRIVER: RISE 120V 500mA
30minutes warm-up

ISOLUX DIAGRAM

Test:U:120.02V I:0.1708A P:20.344W PF:0.9908 Freq:59.98Hz Lamp Flux:2052.9x1 lm		
NAME: 2319.200-H3AM-500	TYPE:	WEIGHT:
SPEC.:3000K	DIM.:	SERIAL No.:2303140309
MFR.: RISE	SUR.:0.002826m2	Shielding Angle:



C Range: 0 - 360DEG
C Interval: 30.0DEG
Test Speed: HIGH
Temperature:25.3DEG
Operators:Zoe
Test Date:2023-3-14

γ Range: 0 - 180DEG
γ Interval: 1.0DEG
Test System:EVERFINE GO-SPEX500_V1 SYSTEM V2.00.416
Humidity:65.0%
Test Distance:3.160m [K=1.0000]
Remarks: LAMP:BXRE-30G1000-A-83 Ra:90
LENS: TH-YL5023H-60D 60R
DRIVER: RISE 120V 500mA
30minutes warm-up

LED Avg.L Report

Test:U:120.02V I:0.1708A P:20.344W PF:0.9908 Freq:59.98Hz Lamp Flux:2052.9x1 lm		
NAME: 2319.200-H3AM-500	TYPE:	WEIGHT:
SPEC.:3000K	DIM.:	SERIAL No.:2303140309
MFR.: RISE	SUR.:0.002826m2	Shielding Angle:

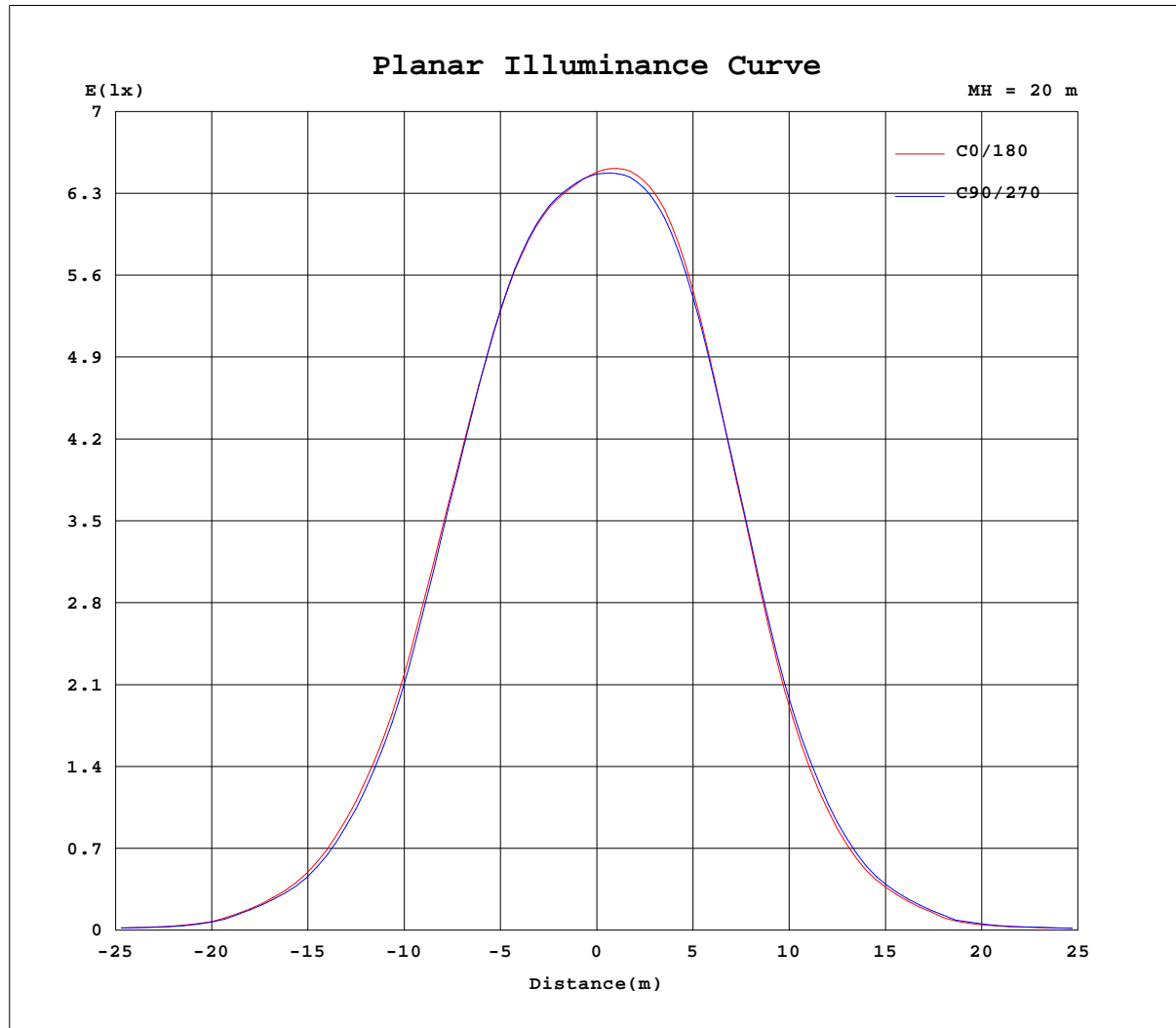
AvgL	cd/m2
L_0~180(65)av	6361
L_0~180(75)av	688
L_0~180(85)av	194
L_90~270(65)av	6232
L_90~270(75)av	460
L_90~270(85)av	168
L_45(65)av	6030
L_45(75)av	605
L_45(85)av	127

Standard: GB/T 29293-2012

C Range: 0 - 360DEG
C Interval: 30.0DEG
Test Speed: HIGH
Temperature:25.3DEG
Operators:Zoe
Test Date:2023-3-14

γ Range: 0 - 180DEG
 γ Interval: 1.0DEG
Test System:EVERFINE GO-SPEX500_V1 SYSTEM V2.00.416
Humidity:65.0%
Test Distance:3.160m [K=1.0000]
Remarks: LAMP:BXRE-30G1000-A-83 Ra:90
LENS: TH-YL5023H-60D 60R
DRIVER: RISE 120V 500mA
30minutes warm-up

Planar Illuminance Curve



C Range: 0 - 360DEG
 C Interval: 30.0DEG
 Test Speed: HIGH
 Temperature: 25.3DEG
 Operators: Zoe
 Test Date: 2023-3-14

γ Range: 0 - 180DEG
 γ Interval: 1.0DEG
 Test System: EVERFINE GO-SPEX500_V1 SYSTEM V2.00.416
 Humidity: 65.0%
 Test Distance: 3.160m [K=1.0000]
 Remarks: LAMP: BXRE-30G1000-A-83 Ra: 90
 LENS: TH-YL5023H-60D 60R
 DRIVER: RISE 120V 500mA
 30minutes warm-up



LUMINOUS DISTRIBUTION INTENSITY DATA

Test:U:120.02V I:0.1708A P:20.344W PF:0.9908 Freq:59.98Hz Lamp Flux:2052.9x1 lm		
NAME: 2319.200-H3AM-500	TYPE:	WEIGHT:
SPEC.:3000K	DIM.:	SERIAL No.:2303140309
MFR.: RISE	SUR.:0.002826m2	Shielding Angle:

Table--1

UNIT: cd

C(DEG) γ (DEG)	0	30	60	90	120	150	180	210	240	270	300	330						
0	2588	2588	2588	2588	2588	2588	2588	2588	2588	2588	2588	2588						
5	2541	2532	2537	2554	2577	2599	2621	2628	2620	2606	2583	2558						
10	2468	2460	2459	2480	2509	2538	2576	2590	2578	2552	2522	2500						
15	2262	2262	2256	2272	2269	2269	2325	2336	2331	2310	2307	2304						
20	1888	1894	1879	1876	1832	1791	1843	1848	1862	1862	1895	1928						
25	1393	1403	1376	1355	1271	1208	1246	1239	1268	1279	1366	1427						
30	892	908	888	850	773	710	733	726	748	779	856	921						
35	506	522	505	471	406	360	374	366	373	402	468	517						
40	252	267	237	240	200	169	177	163	162	193	232	256						
45	87.1	95.2	87.0	81.8	70.2	53.2	55.4	50.1	52.7	65.1	73.3	95.1						
50	39.6	40.2	37.3	37.3	34.1	32.9	34.7	33.7	34.0	35.8	35.5	35.4						
55	29.0	29.4	28.1	27.8	25.3	23.9	25.4	24.7	25.0	26.5	26.5	26.6						
60	19.4	20.0	18.8	18.1	15.3	13.5	14.1	13.5	13.9	15.8	17.0	18.2						
65	9.37	9.29	8.70	8.16	6.72	5.72	5.82	5.58	5.72	6.73	7.51	8.65						
70	3.73	3.84	3.36	3.14	2.39	1.99	2.03	1.91	1.91	2.36	2.82	3.45						
75	0.86	0.97	0.66	0.51	0.17	0.13	0.14	0.12	0.13	0.16	0.47	0.88						
80	0.08	0.06	0.06	0.06	0.05	0.05	0.06	0.04	0.04	0.05	0.05	0.06						
85	0.05	0.04	0.04	0.04	0.03	0.03	0.04	0.03	0.03	0.04	0.03	0.04						
90	0.00	0.00	0.00	0.00	0.00	0.00	0.00	0.00	0.00	0.00	0.00	0.00						
95	0.00	0.00	0.00	0.00	0.00	0.00	0.00	0.00	0.00	0.00	0.00	0.00						
100	0.00	0.00	0.00	0.00	0.00	0.00	0.00	0.00	0.00	0.00	0.00	0.00						
105	0.00	0.00	0.00	0.00	0.00	0.00	0.00	0.00	0.00	0.00	0.00	0.00						
110	0.00	0.00	0.00	0.00	0.00	0.00	0.00	0.00	0.00	0.00	0.00	0.00						
115	0.00	0.00	0.00	0.00	0.00	0.00	0.00	0.00	0.00	0.00	0.00	0.00						
120	0.00	0.00	0.00	0.00	0.00	0.00	0.00	0.00	0.00	0.00	0.00	0.00						
125	0.00	0.00	0.00	0.00	0.00	0.00	0.00	0.00	0.00	0.00	0.00	0.00						
130	0.00	0.00	0.00	0.00	0.00	0.00	0.00	0.00	0.00	0.00	0.00	0.00						
135	0.00	0.00	0.00	0.00	0.00	0.00	0.00	0.00	0.00	0.00	0.00	0.00						
140	0.00	0.00	0.00	0.00	0.00	0.00	0.00	0.00	0.00	0.00	0.00	0.00						
145	0.00	0.00	0.00	0.00	0.00	0.00	0.00	0.00	0.00	0.00	0.00	0.00						
150	0.00	0.00	0.00	0.00	0.00	0.00	0.00	0.00	0.00	0.00	0.00	0.00						
155	0.00	0.00	0.00	0.00	0.00	0.00	0.00	0.00	0.00	0.00	0.00	0.00						
160	0.00	0.00	0.00	0.00	0.00	0.00	0.00	0.00	0.00	0.00	0.00	0.00						
165	0.00	0.00	0.00	0.00	0.00	0.00	0.00	0.00	0.00	0.00	0.00	0.00						
170	0.00	0.00	0.00	0.00	0.00	0.00	0.00	0.00	0.00	0.00	0.00	0.00						
175	0.00	0.00	0.00	0.00	0.00	0.00	0.00	0.00	0.00	0.00	0.00	0.00						
180	0.00	0.00	0.00	0.00	0.00	0.00	0.00	0.00	0.00	0.00	0.00	0.00						

C Range: 0 - 360DEG
C Interval: 30.0DEG
Test Speed: HIGH
Temperature:25.3DEG
Operators:Zoe
Test Date:2023-3-14

γ Range: 0 - 180DEG
γ Interval: 1.0DEG
Test System:EVERFINE GO-SPEX500_V1 SYSTEM V2.00.416
Humidity:65.0%
Test Distance:3.160m [K=1.0000]
Remarks: LAMP:BXRE-30G1000-A-83 Ra:90
LENS: TH-YL5023H-60D 60R
DRIVER: RISE 120V 500mA
30minutes warm-up